



SUITE

Concept



E

Suite Concept is a tufted range aimed at various high-end applications. All our carpets are made from a combination of 80% British and New Zealand wool blended with 20% polyamide. The high performance and durable combination of 2-ply yarn provides you with an extra dimension of comfort and appearance. The combination of the yarn ensures that the carpet is incredibly durable and strong.

F

SUITE CONCEPT est une qualité tuftée supérieure, qui convient pour différentes applications. Toutes ces moquettes sont composées de 80% de laine d'Angleterre et de Nouvelle Zélande et de 20% de polyamide. Le fil résistant 2 bouts répond à toutes vos exigences et vous procure une dimension supplémentaire en confort et en aspect. La composition du fil assure à cette moquette une solidité et une résistance à l'usure incroyable.

D

Suite Concept ist eine hochwertige Tuftqualität, die für verschiedene Einsatzbereiche geeignet ist. Sie besteht aus 80% Britischer- und Neuseeland Wolle sowie aus 20% antistatischem Polyamid. Das starke 2-ply Garn entspricht allen Anforderungen und garantiert ausserordentlichen Komfort und Ausstrahlung. Die Garnzusammenstellung sorgt für besonders lange Lebensdauer.

N

Suite Concept is een hoogwaardig getufte kwaliteit geschikt voor diverse toepassingen. Al onze tapijten bestaan uit een combinatie van 80% Britse & Nieuw-Zeelandse wol met 20% Polyamide. Het duurzame 2-ply garen beantwoordt aan al uw eisen en bezorgen U een extra dimensie in comfort en uitstraling. De samenstelling van het garen zorgt ervoor dat het tapijt ongelooflijk slijtvast en sterk is.

I

Suite Concept è una gamma tufted adatta per diversi utilizzi in fascia medio alta. La composizione del filato è una combinazione di 80% di lana inglese e della Nuova Zelanda miscelata con il 20% di poliammide. Le alte prestazioni e la particolare resistenza del filato a 2 capi offrono maggiore confort e miglior aspetto estetico oltre ad una incredibile resistenza e garanzia di durata nel tempo.

E Custom designs can be created with the Suite Concept. Design, colour and pile weight (1100 gr/m² or 1500 gr/m²) can be altered for a unique carpet for projects over 400 sqm. Colour choice, max 4 colours per design. The colours can be chosen from: pombox Lano,RAL, NCS, Pantone,

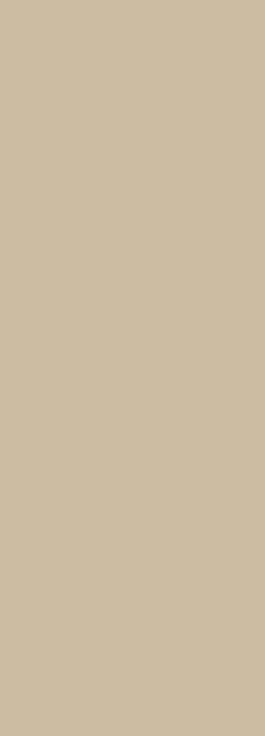
F Concevoir sur mesure est devenu possible avec le SUITE CONCEPT. L'adaptation d'un dessin selon vos souhaits coloristiques et selon le poids velours (1100 gr/m² ou 1500 gr/m²) donne lieu à des moquettes uniques, pour des chantiers à partir de 400 m². Par dessin, vous avez le choix entre max. 4 coloris. Les coloris peuvent être choisis dans : la 'Pombox Lano', la gamme RAL, la gamme NCS, les coloris Pantone, ...

D Im Suite Concept sind massgeschneiderte Entwürfe möglich. Anpassungen von Dessins an Ihre Farbwünsche und Florgewicht. (1100 gr/m² of 1500 gr/m²) garantieren einen individuellen Belag für Projekte ab 400m². Pro Dessin können max. 4 Farben eingesetzt werden. Wahlweise aus der Lano Pombox, RAL Farben, NCS, Pantone, usw.

N Ontwerpen op maat is mogelijk met het Suite Concept. Aanpassingen van een design aan uw kleurwensen en poolgewicht (1100 gr/m² of 1500 gr/m²) zorgen voor een uniek tapijt voor projecten vanaf 400 m². Per design heb je een keuze uit max. 4 kleuren. De kleuren kunnen gekozen worden uit: pombox Lano, RAL kleuren, NCS kleuren, Pantone kleuren,

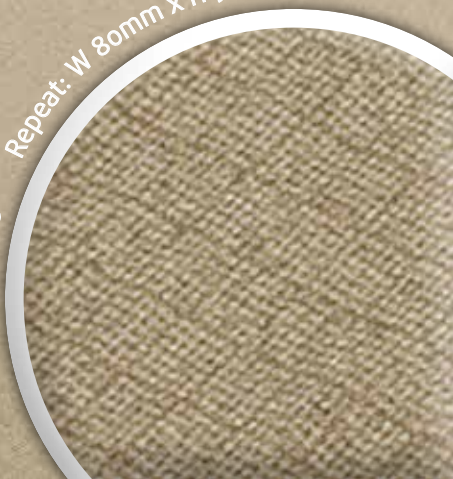
I E'possibile realizzare progetti personalizzati nella qualità Suite, sia nel disegno, nel colore e peso del filato (1100 gr/mq oppure 1500 gr/mq) a partire da 400 mq. Per quanto riguarda la scelta del colore è possibile scegliere al massimo 4 colori per disegno, che possono essere scelti nel pombox lano oppure nelle varianti del RAL, NCS, Pantone, ...

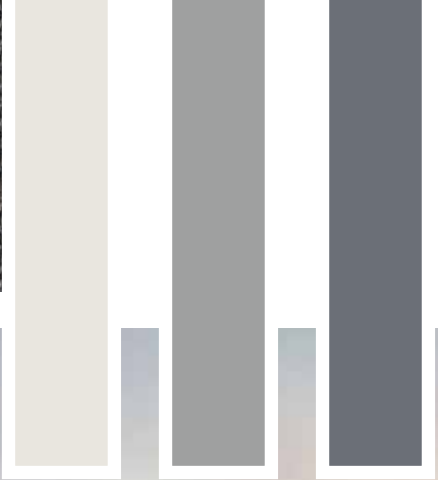
Concept





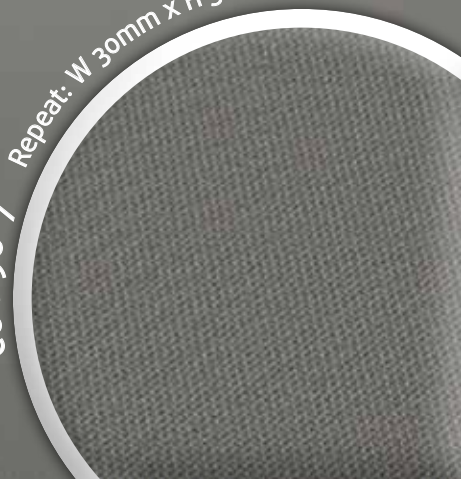
COC 23-6
Repeat: W 80mm x H 90mm







COC 96-7 Repeat: W 30mm x H 30mm

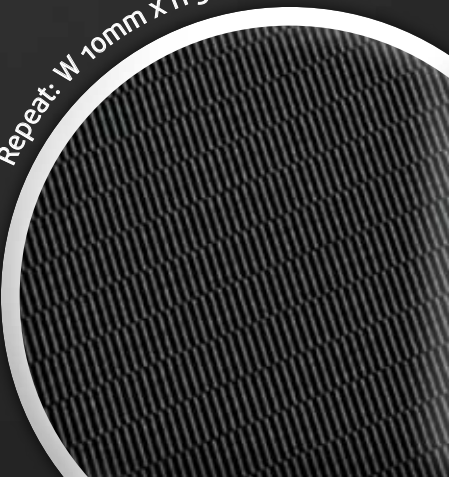






COC 54

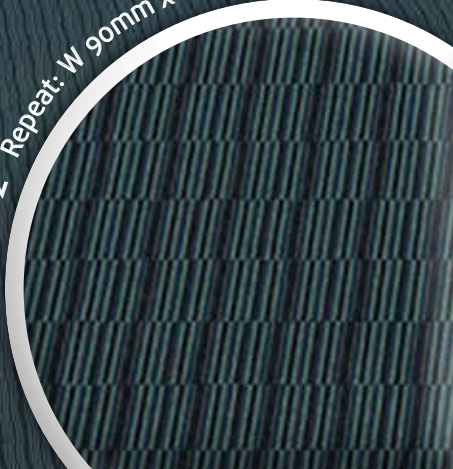
Repeat: W 10mm x H 50mm







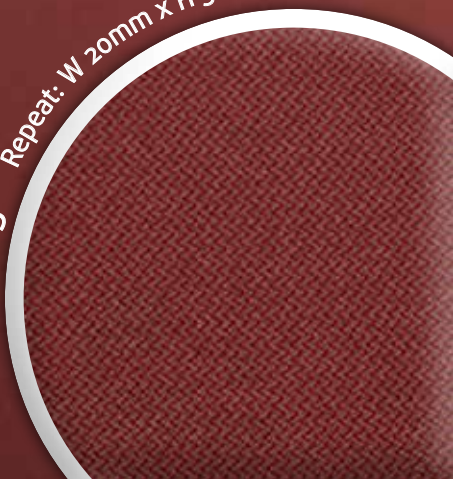
COC 256-2 Repeat: W 90mm x H 150mm







COC 41-3 Repeat: W 20mm x H 30mm

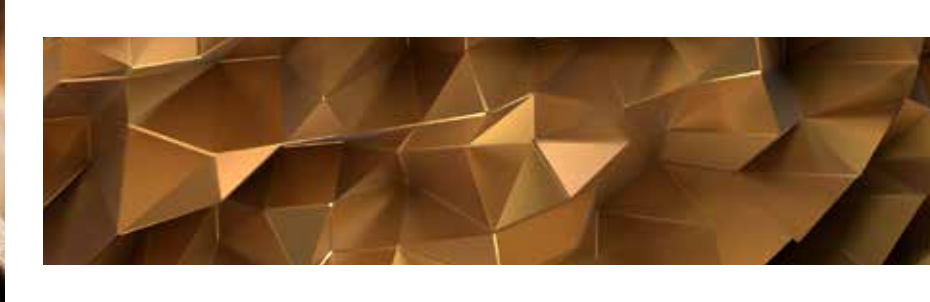






COC 115-DM5

Repeat: H 240mm x H 10mm





COC 233-5 Repeat: W 70mm x H 60mm

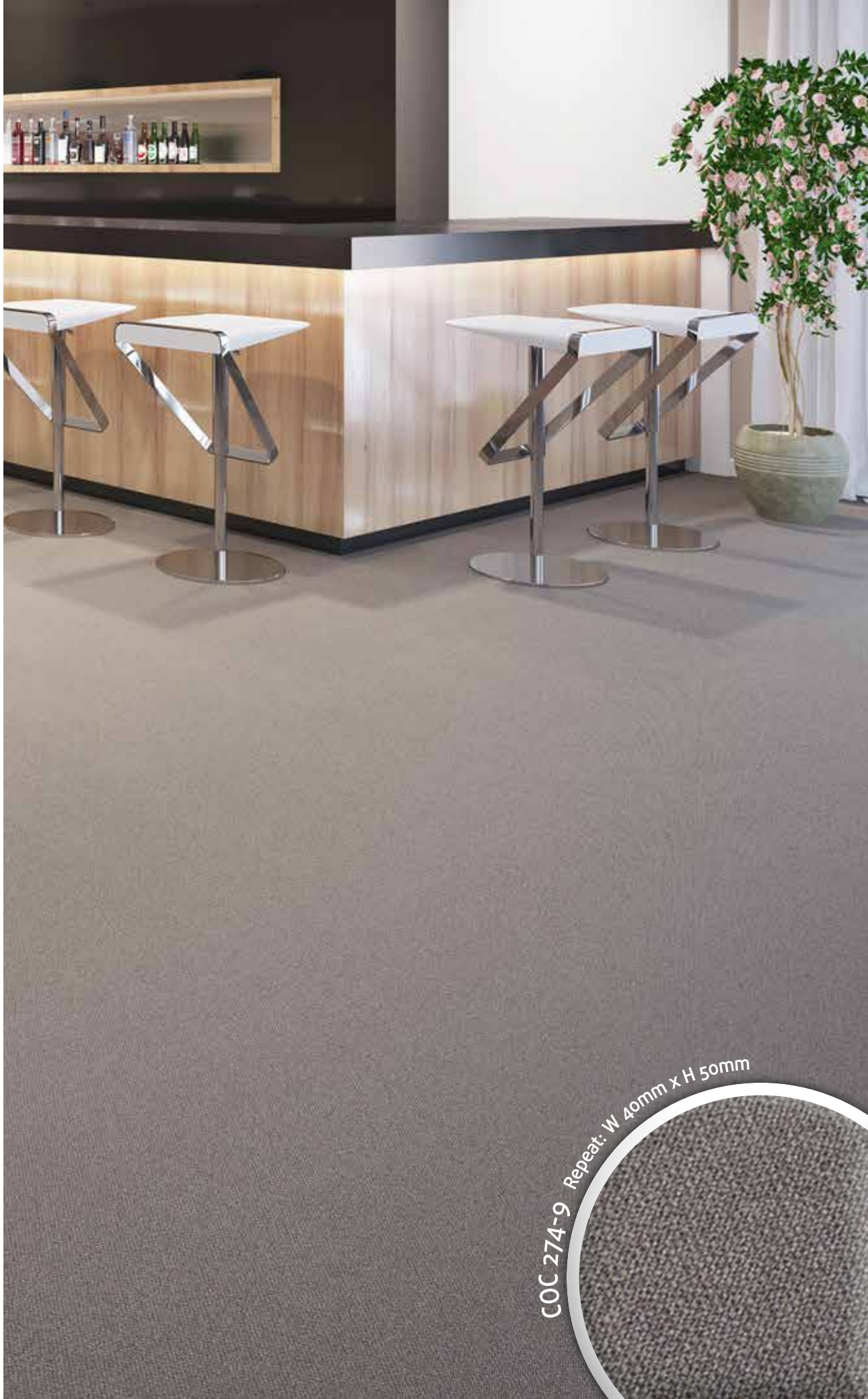




COC 235-5 Repeat: W30mm X 20mm

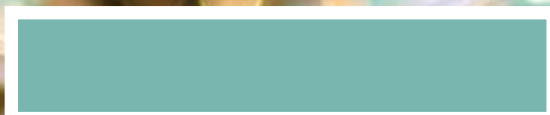
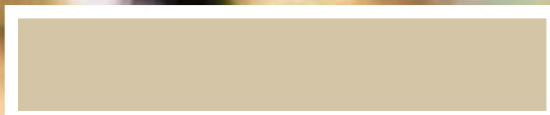
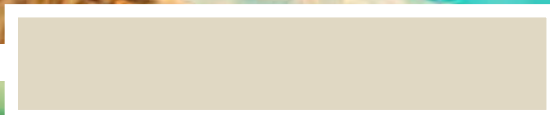






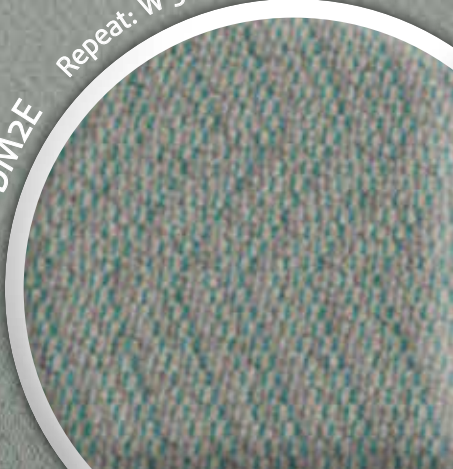
COC 274-9 Repeat: W 40mm x H 50mm







COC 260-DM2E Repeat: W 50mm x H 150mm



Technical data sheet

1100 gr

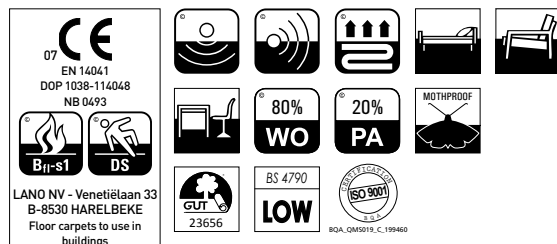
SUITE

Concept

Also available on Felt Backing

| | | | |
|--|---|---|--|
| Fabricagemethode Technique de fabrication Manufacturing process Herstellungsverfahren Tecnica di fabbricazione tufted, 1/8" cross over | Poolsamenstelling Nature du velours Pile composition Polmaterial Composizione felpa 80% WO 20% PA | Tuftdoek Premier dossier Primary backing Trägermaterial Tela di supporto woven | Rugtype Envers Secondary backing Rücken Sottofondo SB |
| Totale dikte Hauteur totale Total height Gesamthöhe Spessore totale ± 8,5 mm | Nuttige poolhoogte Hauteur de velours utile Effective pile height Tatsächliche Florhöhe Spessore felpa ± 5,6 mm | Breedte Largeur Width Breite Altezza ± 400 cm | Aantal noppen/m ² Nombre de points/m ² Number of knots/sqm Noppenzahl/m ² Numero di punti/mq ± 130725 |
| Poolinzetgewicht/m ² Poids mis en oeuvre/m ² Pile weight/sqm Poleinsatzgewicht/m ² Peso felpa/mq ± 1100 gr | Totaal gewicht/m ² Poids total/m ² Total weight/sqm Poleinsatzgewicht/m ² Peso totale/mq ± 2700 gr | EN 13501-1 Brandgedrag Comportement au feu Fire behaviour Brennverhalten Reazione al fuoco B_{fl}-s1 | EN 1307-2004 Classificatie Classification Classification Klassifizierung Classificazione Class 33 Commercial Heavy |
| ISO 140/8 1997 Contactgeluidsisolatie Isolation aux bruits d'impact Impact sound insulation Trittschallverbesserungsmaß Miglioramento acustico ± 27 dB | ISO 354 Geluidsdempingsvermogen α_s Absorption phonique α_s Sound absorption α_s Schallabsorptionsgrad α_s Grado d'assorbimento acustico α_s ± 0,39 1000 Hz | ISO 11654 Geluidsdempingsvermogen α_w Absorption phonique α_w Sound absorption α_w Schallabsorptionsgrad α_w Grado d'assorbimento acustico α_w ± 0,25 | DIN 52612 Warmteoorlaatweerstand Résistivité thermique Thermal retention Wärmedurchlaßwiderstand Resistenza termica ± 0,098 m²/kW |
| TOG rating ± 0,98 | ISO 105 B02 2000 Lichtechtheid Solidité à la lumière Lightfastness Lichtechtheid Solidità colori alla luce ≥ 5 | ISO 105 E01 2002 Waterrechtheid verkleuring Solidité à l'eau changement couleur Waterfastness change in colour Wasserechtheit Änderung der Farbe Solidità colori all'acqua cambio colore ≥ 3-4 | ISO 105 E01 2002 Waterrechtheid uitbloeding Solidité à l'eau dégorgeement Waterfastness staining Wasserechtheit anbluten Solidità colori all'acqua sfumatura colore ≥ 2-3 |
| ISO 105 X12 2001 Wrijftechtheid droog Solidité au frottement sec Rubbingfastness dry Reibungechtheit trocken Solidità colori allo sfregamento a secco ≥ 3-4 | ISO 105 X12 2001 Wrijftechtheid nat Solidité au frottement humide Rubbingfastness wet Reibungechtheit nass Solidità colori allo sfregamento umido ≥ 3 | | |

(±) These details are approximate. Complete specification details and associated certificates together with tolerances applying to the above can be provided upon request. We reserve the right to improve technical specifications without prior notice. Due to method of manufacture perfect pattern and/or colour matching cannot be guaranteed. In cut-pile carpeting, in rare cases, shading/pile reversal may occur without affecting its fitness for use. Shading/pile reversal can not be considered as a manufacturing or a material defect and will not affect the durability of the carpet. For other languages see: www.lano.com



REACH
The new EU chemicals legislation

Technical data sheet

1500 gr

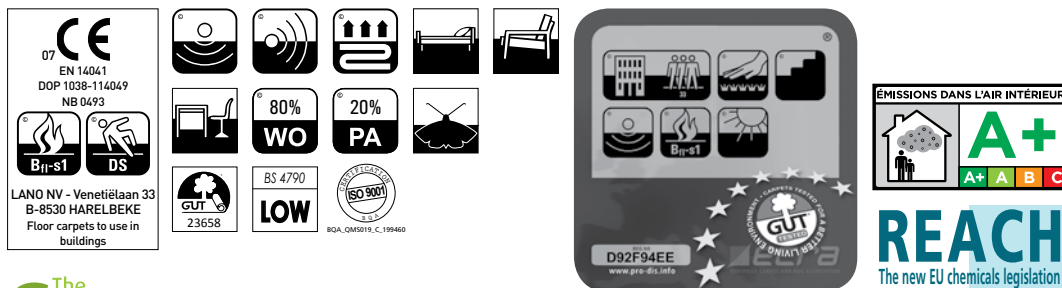
SUITE

Concept

Also available on Felt Backing

| | | | |
|--|--|---|---|
| Fabricagemethode Technique de fabrication Manufacturing process Herstellungsort Tecnica di fabbricazione tufted, 1/8" cross over | Poolsamenstelling Nature du velours Pile composition Polmaterial Composizione felpa 80% WO 20% PA | Tuftdoek Premier dossier Primary backing Trägermaterial Tela di supporto woven | Rugtype Envers Secondary backing Rücken Sottofondo SB |
| Totale dikte Hauteur totale Total height Gesamthöhe Spessore totale ± 9,5 mm | Nuttige poolhoogte Hauteur de velours utile Effective pile height Tatsächliche Florhöhe Spessore felpa ± 6,6 mm | Breedte Largeur Width Breite Altezza ± 400 cm | Aantal noppen/m² Nombre de points/m² Number of knots/sqm Noppenzahl/m² Numero di punti/mq ± 157500 |
| Poolinzetgewicht/m² Poids mis en oeuvre/m² Pile weight/sqm Poleinsatzgewicht/m² Peso felpa/mq ± 1500 gr | Totaal gewicht/m² Poids total/m² Total weight/sqm Poleinsatzgewicht/m² Peso totale/mq ± 3000 gr | EN 13501-1 Brandgedrag Comportement au feu Fire behaviour Brennverhalten Reazione al fuoco B_{fl}-s1 | EN 1307-2004 Classificatie Classification Classification Klassifizierung Classificazione Class 33 Commercial Heavy |
| ISO 140/8 1997 Contactgeluidsisolatie Isolation aux bruits d'impact Impact sound insulation Trittschallverbesserungsmaß Miglioramento acustico ± 32 dB | ISO 354 Geluidsdempingsvermogen α_s Absorption phonique α_s Sound absorption α_s Schallabsorptionsgrad α_s Grado d'assorbimento acustico α_s ± 0,4 1000 Hz | ISO 11654 Geluidsdempingsvermogen α_w Absorption phonique α_w Sound absorption α_w Schallabsorptionsgrad α_w Grado d'assorbimento acustico α_w ± 0,25 | DIN 52612 Warmteoorlaatweerstand Résistivité thermique Thermal retention Wärmedurchlaßwiderstand Resistenza termica ± 0,09 m²/kW |
| TOG rating ± 0,9 | ISO 105 B02 2000 Lichtechtheid Solidité à la lumière Lightfastness Lichtechtheid Solidità colori alla luce ≥ 5 | ISO 105 E01 2002 Waterrechtheid verkleuring Solidité à l'eau changement couleur Waterfastness change in colour Wasserechtheit Änderung der Farbe Solidità colori all'acqua cambio colore ≥ 3-4 | ISO 105 E01 2002 Waterrechtheid uitbloeding Solidité à l'eau dégorgement Waterfastness staining Wasserechtheit anbluten Solidità colori all'acqua sfumatura colore ≥ 2-3 |
| ISO 105 X12 2001 Wrijftechtheid droog Solidité au frottement sec Rubbingfastness dry Reibungechtheit trocken Solidità colori allo sfregamento a secco ≥ 3-4 | ISO 105 X12 2001 Wrijftechtheid nat Solidité au frottement humide Rubbingfastness wet Reibungechtheit nass Solidità colori allo sfregamento umido ≥ 3 | | |

(±) These details are approximate. Complete specification details and associated certificates together with tolerances applying to the above can be provided upon request. We reserve the right to improve technical specifications without prior notice. Due to method of manufacture perfect pattern and/or colour matching cannot be guaranteed. In cut-pile carpeting, in rare cases, shading/pile reversal may occur without affecting its fitness for use. Shading/pile reversal can not be considered as a manufacturing or a material defect and will not affect the durability of the carpet. For other languages see: www.lano.com





Lano
Venetiëlaan 33
8530 Harelbeke

www.lano.com